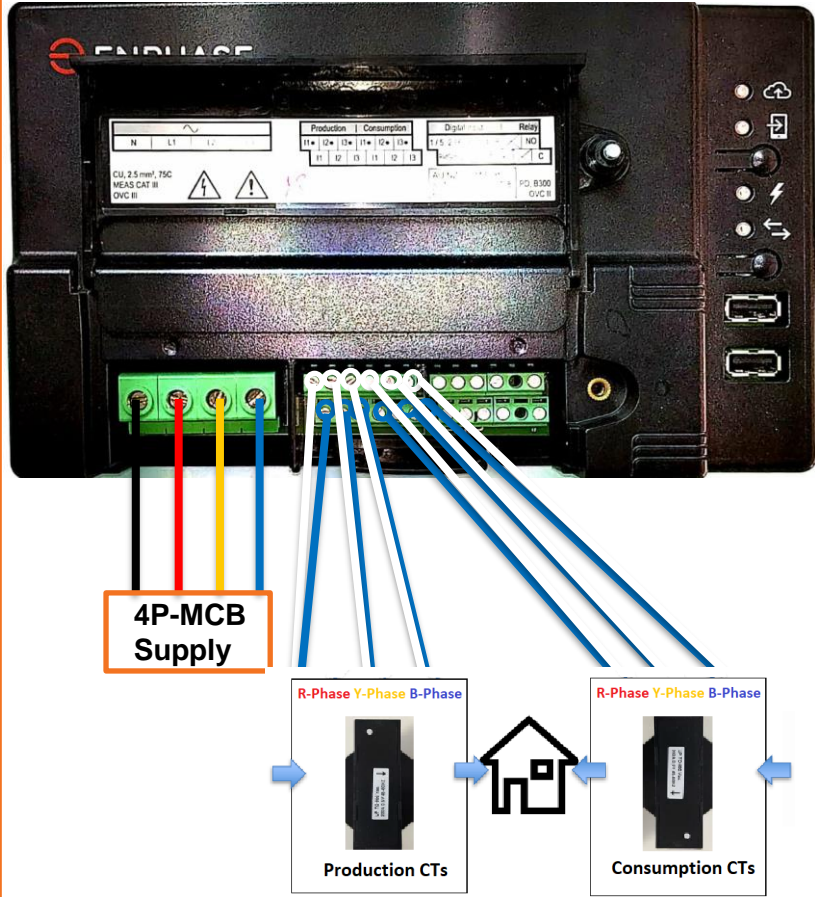
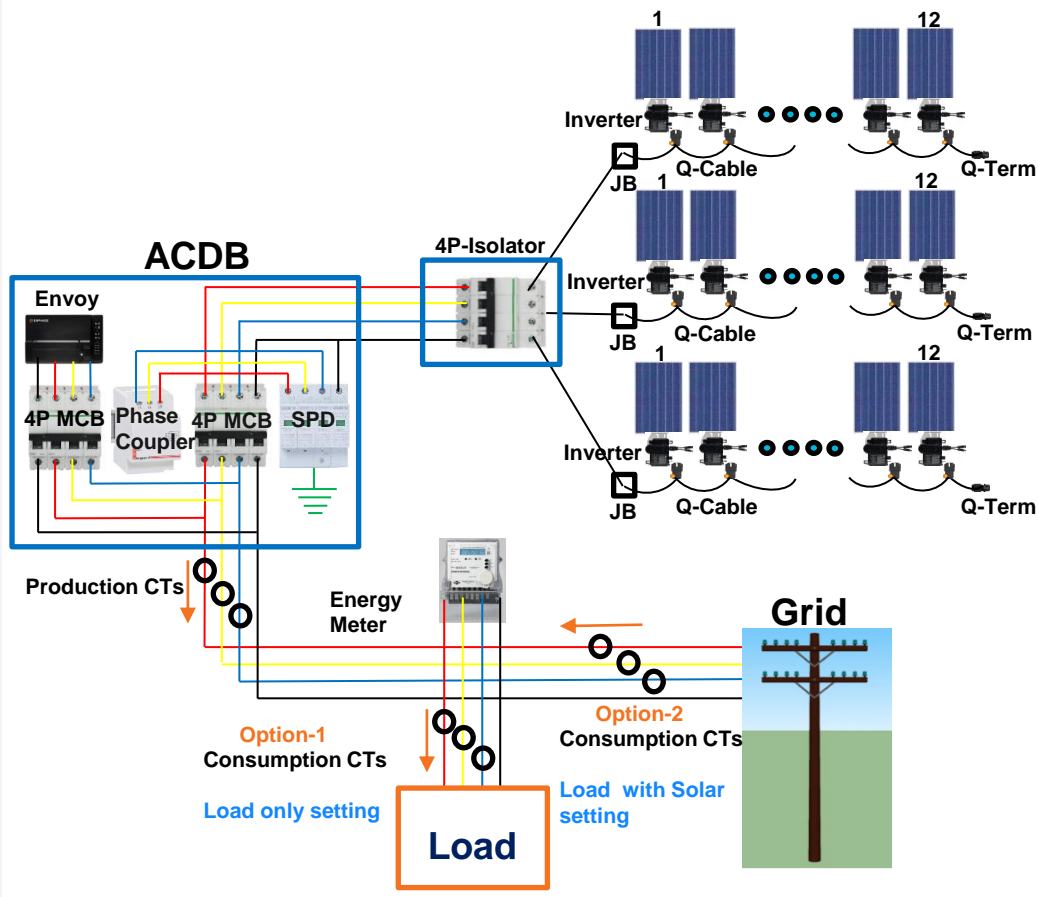


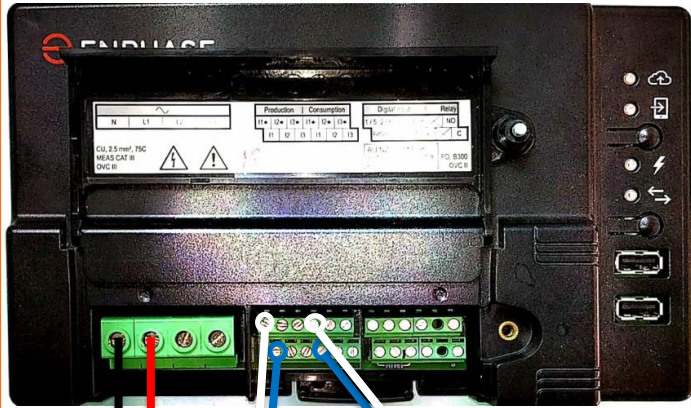
Envoy CTs Connection



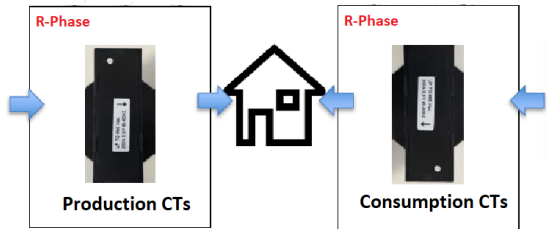
3PHASE-SLD



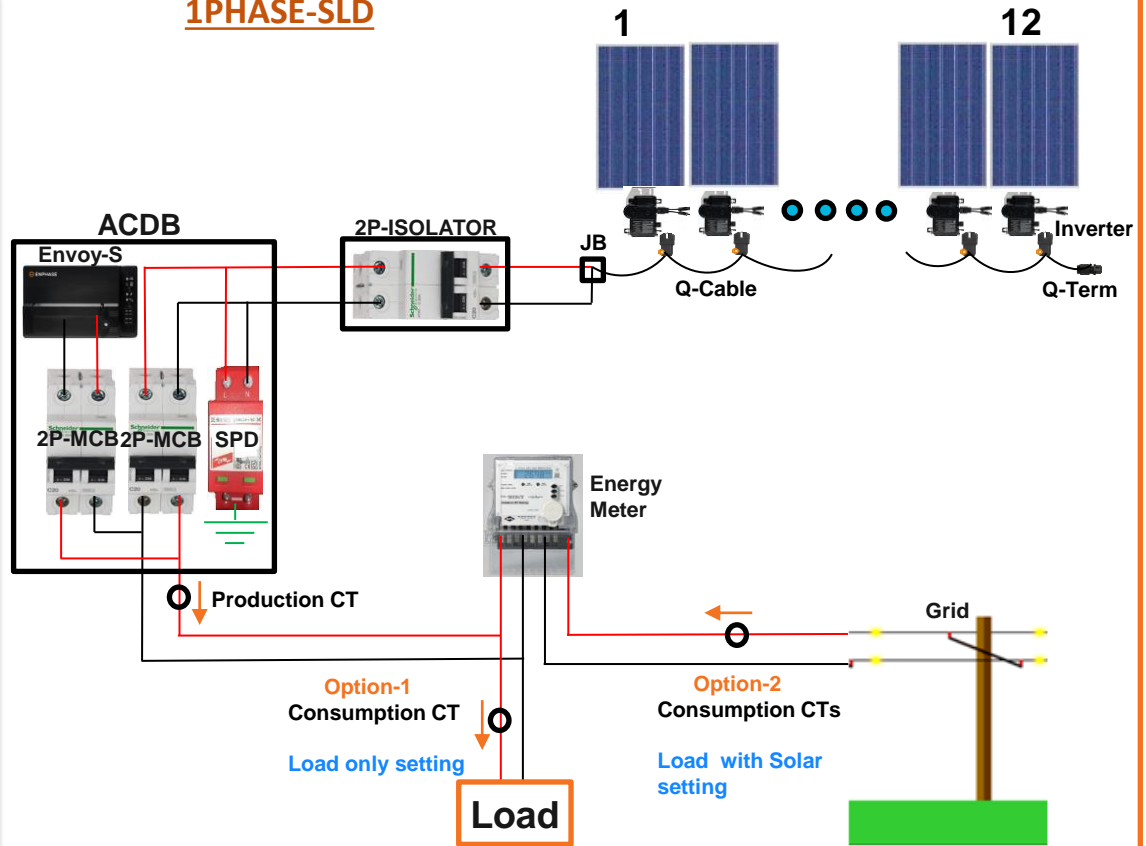
Envoy CTs Connection



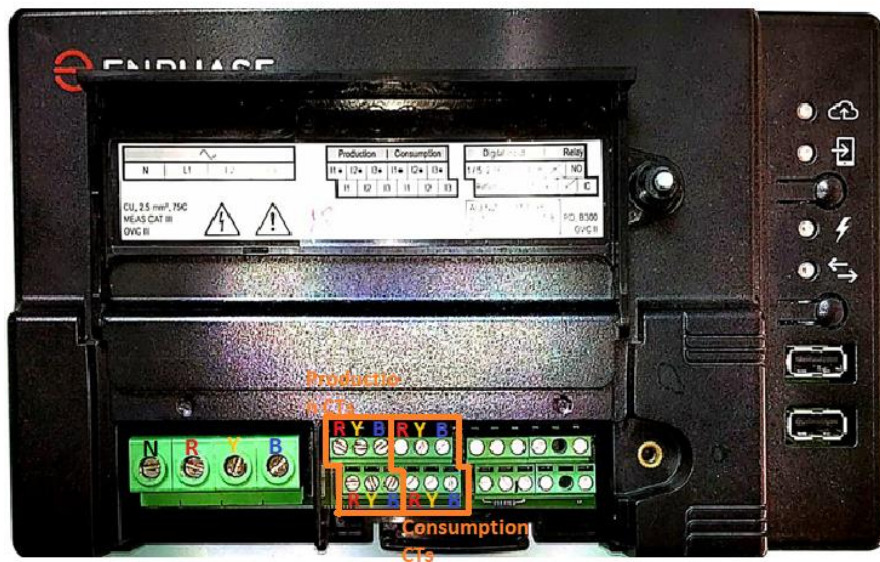
**2P-MCB
Supply**













1PHASE-SLD



Envoy



-   — **Network Communications LED:** Green when Envoy-S is connected to Enlighten.
-   — **AP Mode LED:** Green when Envoy's AP Wi-Fi network is available.
-  — **AP Mode Button:** Press to enable Envoy's AP Mode for connecting with a mobile device. Hold for 5 seconds to start WPS connection to a router.
-   — **Power Production LED:** Green when microinverters are producing power.
-   — **Device Communications LED:** Green when microinverters are communicating with Envoy-S.
-  — **Device Scan Button:** Press to start/stop 15-minute scan for microinverters over the power line.